

Office to let

Sema Office - London Building

Bucharest, Sector 6, 319 Splaiul Independentei



Building information

Building status	Existing
Year of construction	2022
Parking ratio	To be agreed
Total building area	21 347 sq m

Commercial terms

Office space*	after login *
Parking	after login *
Service charge*	after login *
Minimum lease term	after login *
Availability	after login *

* Asking terms for m²/month

Location



Available space

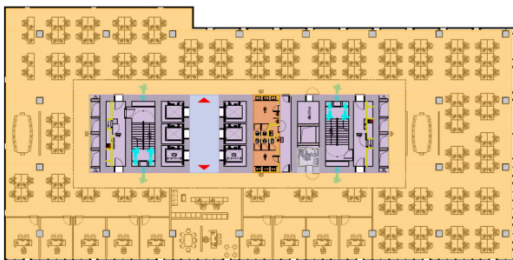
16 915 sq m

Available office space

575 sq m

Minimum office space

Typical floor plan



Available space

Floor	Vacant space	Availability
0	please contact us *	please contact us *
1	please contact us *	please contact us *
2	please contact us *	please contact us *
6 - 9	please contact us *	please contact us *
10	please contact us *	please contact us *
11 - 14	please contact us *	please contact us *
15	please contact us *	please contact us *
Total	after login *	

Public transport

Metro: M1
Bus: 201, N110
Tram: 41

Contact

+40 21 302 3400
More information